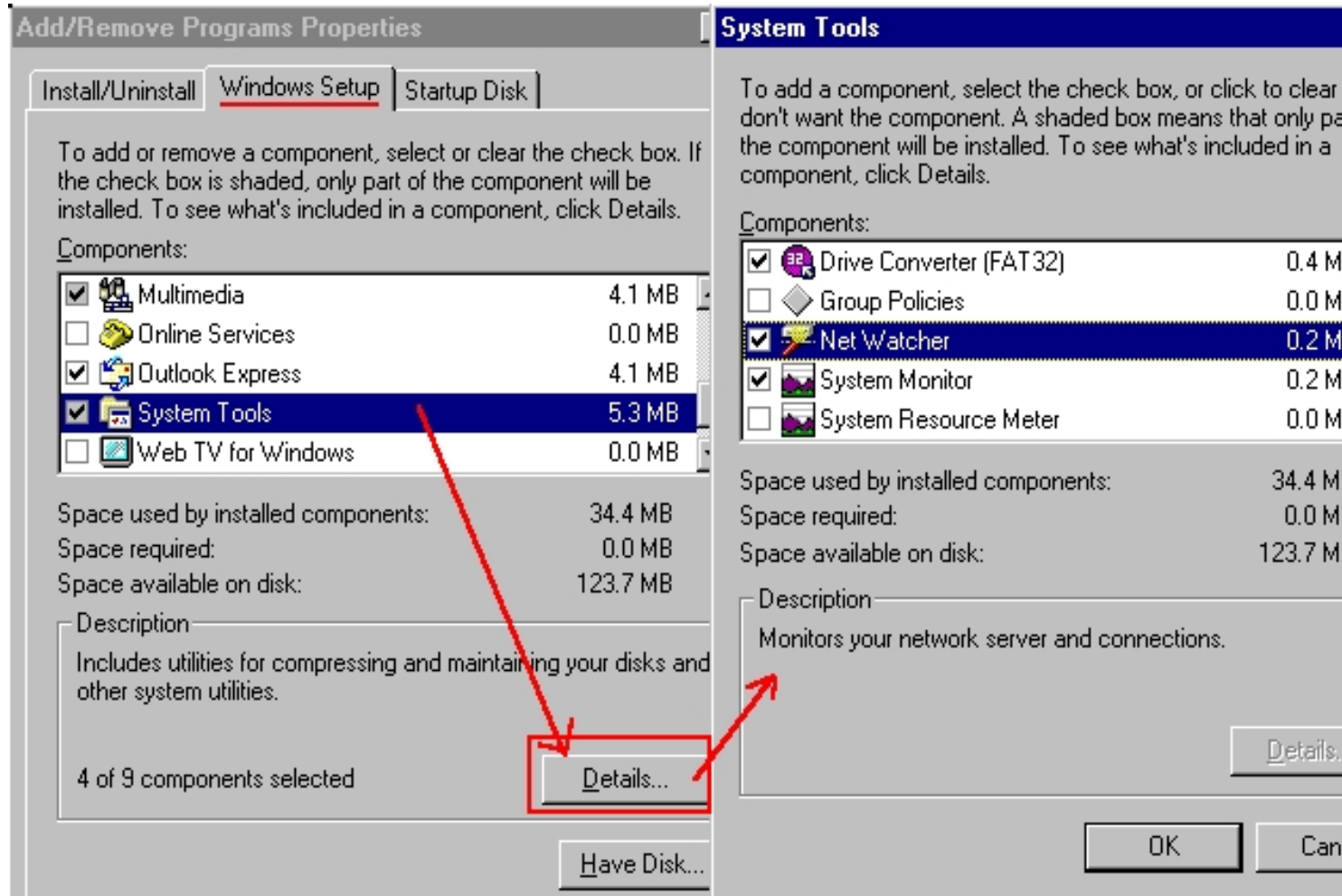
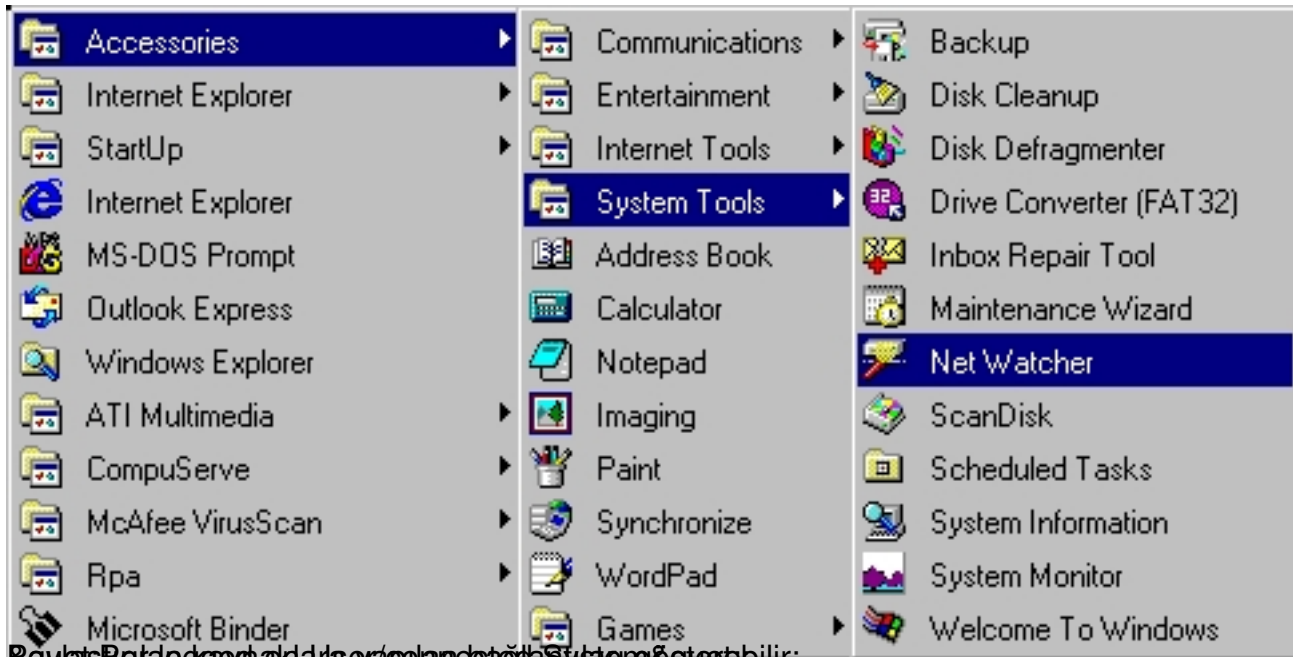


Windows 95, Windows 95 server'a yapılan bağlantıları görmek ve kontrol etmek için bir araca sahiptir. Bu aslında windows kurulurken de kurabileceğiniz bir windows aksesuarıdır.



"Accessories" "System Tools";



**Net Watcher - 1 Connection(s) to \\P120\_HOME**

Administer View Help

Connections to this server

| User   | Computer | Shares | Open Files | Connected |
|--------|----------|--------|------------|-----------|
| HELMIG | T2110    | 1      | 1          | 00:11:30  |

Shared folders connected to and files

- NET\_COMMON
  - E:\NET\_COMMON\info.doc

**Net Watcher - 2 Shared Folder(s) on \\P120\_HOME**

Administer View Help

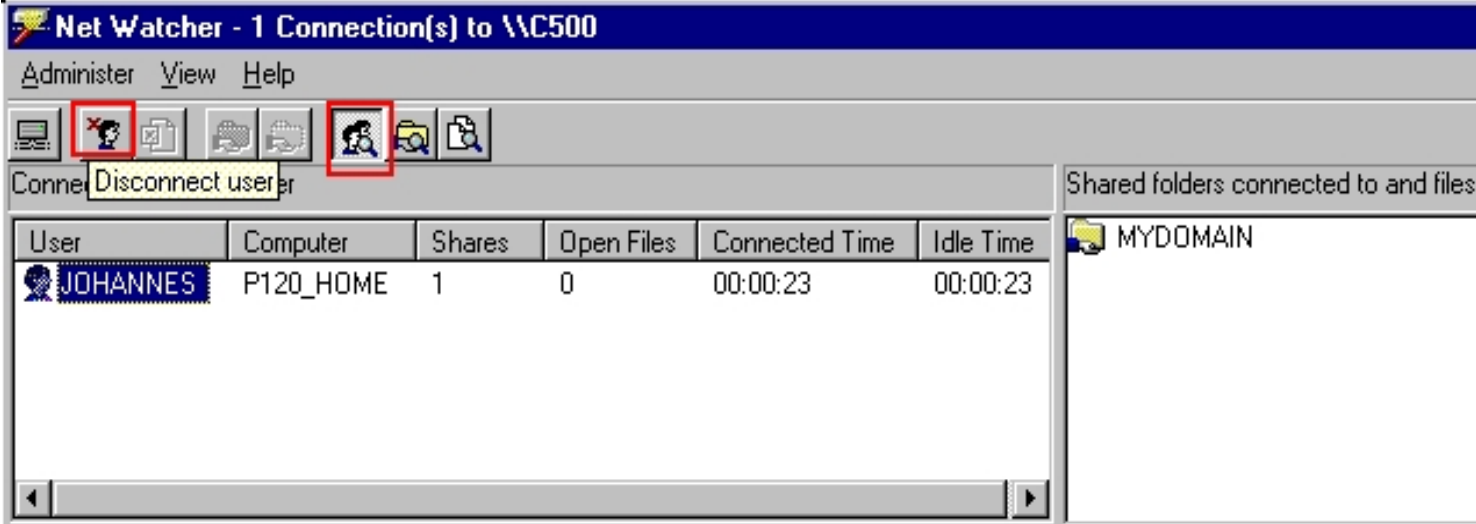
Shared folders and printers

| Shared Folder | Shared As   | Access Type | Comment |
|---------------|-------------|-------------|---------|
| E:\NET_COM... | NET_COMM... | Full        |         |
| E:\NET_HTML   | NET_HTML    | Read Only   |         |

Connections to this share and files

- T2110
  - E:\NET\_COMMON\info.doc

"per accessed File":



"Disconnect User": Bu komut ile size bağlı bir bilgisayarın bağlantısını kesebilirsiniz:

